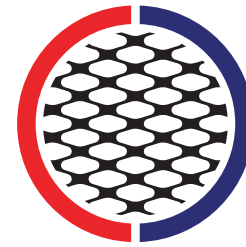
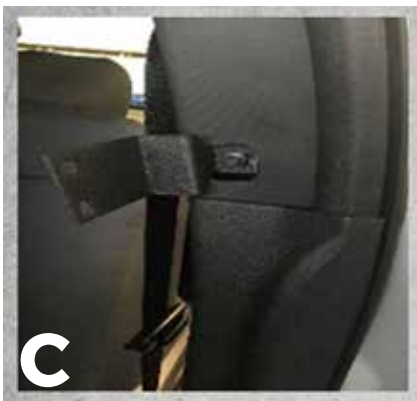
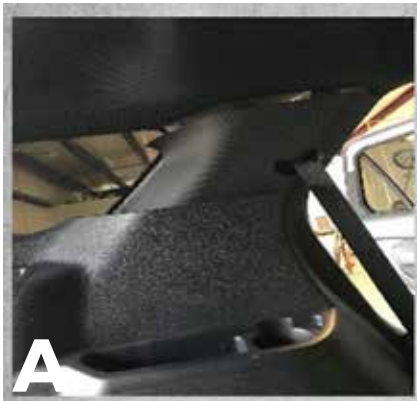




## Ford Explorer PPU/SUV 2011-2019



# CUSTOM CAGE

## Ford Explorer PPU/SUV 2011-2019



## INSTALLATION GUIDE

## Ford Explorer PPU/SUV 2011-2019

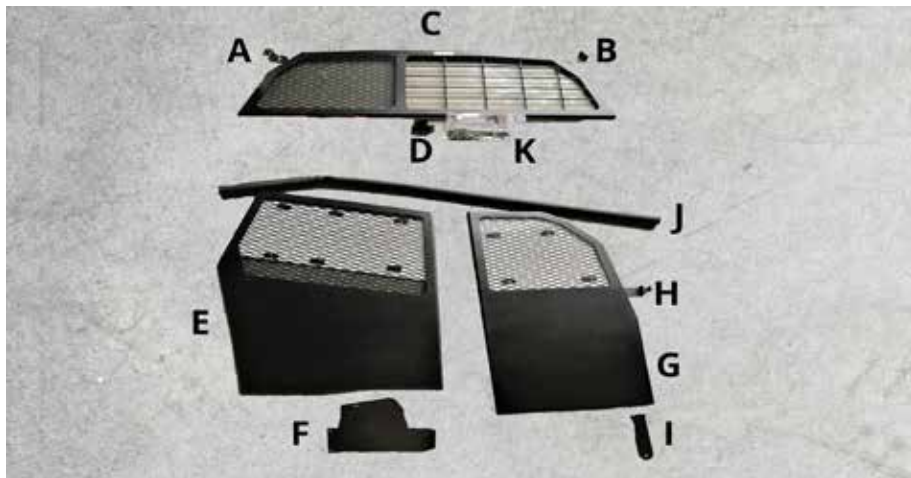
### YOU WILL NEED:

A partner to assist  
Installation guide  
Socket Set  
Drill with 5/32 drill bit  
Impact  
Utility Knife  
Ratchet  
Center punch

Masking tape  
Panel tools  
Cutters

### PARTS LIST

A. Passenger Side Cargo Barrier Bracket  
B. Driver Side Cargo Barrier Bracket  
C. Cargo Barrier  
D. Driver Side Inner Molding Block  
E. Side Screen  
F. Floor Bracket (Kick Plate)  
G. Front Screen  
H. Front Screen Upper Bracket  
I. Seat Rail Bracket  
J. Pre-Slit Foam  
K. Hardware and Installation Guide



## Ford Explorer PPU/SUV 2011-2019

### INSTALLATION INSTRUCTIONS

**DO NOT TIGHTEN ANY BOLTS UNTIL ASSEMBLY IS COMPLETE!**

1. Install cargo barrier bracket **loosely** to the cargo barrier passenger side. The Custom Cage logo on cargo barrier faces the front of vehicle.
2. Install cargo barrier bracket **loosely** to the cargo barrier driver side.
3. Loosen lower plastic from the driver side rear area. You do not have to fully remove in order to remove the bolt. Remove the upper plastic from driver side C-Pillar. (Photo A)
4. Install driver side inner molding block with tap screw. Be sure to line up the mark on molding and the block. Be mindful that the U-shaped cutoff will align with where the seatbelt pivots. (Photo B)
5. Before reinstalling the molding and plastic, temporarily mark the X/Y axis on the headliner and door with masking tape. This will assist in correct alignment after you reinstall the upper molding first and then the lower plastic.
6. With a 5/32 drill bit, drill out the hole you marked for the side bracket.
7. Install cargo barrier with tap screws. **Use Caution:** Passenger/prisoner side has very thin metal behind the plastic. **Do not overtighten!**
8. Move passenger side front seat all the way forward. Place side screen between the rear seats and attach to cargo barrier.
9. Slide pre-slit foam over the sidescreen. Then, install floor bracket to side screen inside bottom.
10. Remove outside rear seat rail bolt and **loosely** install floor bracket. Do not tighten until completion.
11. Remove rear passenger grab handle. Install upper front screen bracket in lower hole. Do not tighten until completion. (Photo C)
12. Attach front screen to side screen. Attach front screen to seat rail bracket and front screen upper bracket.
13. Install foam tube on top of front screen and down the side.
14. Tighten all bolts.
15. Finish lining the front screen with foam tube using zip ties to secure. Cut off excess foam.
16. Installation is complete. (Photo D)